

Confidence and Trust: Public Opinion Around the World

Presentation to the IPCC Symposium

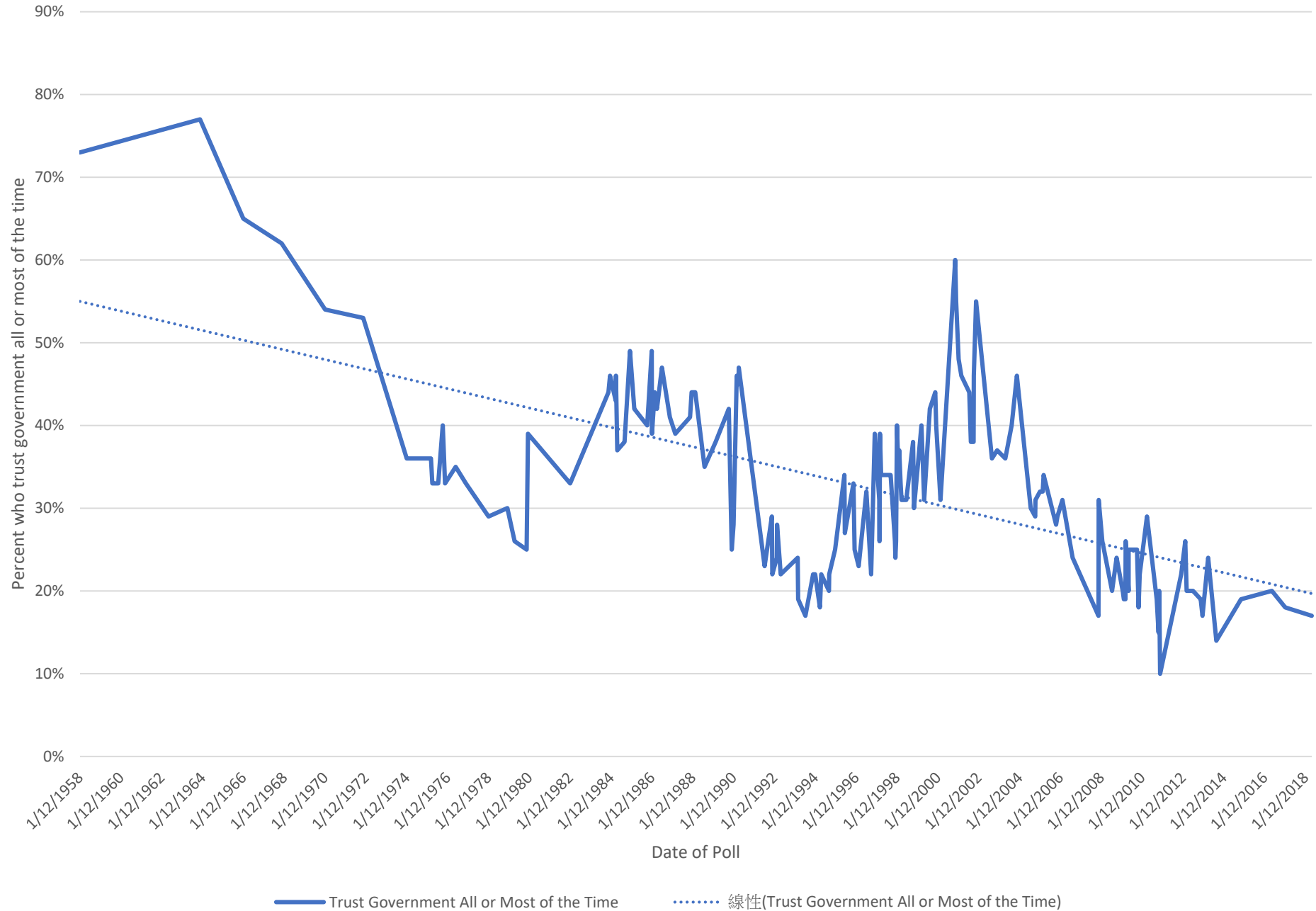
June 6, 2019

Chase H. Harrison, Ph.D.

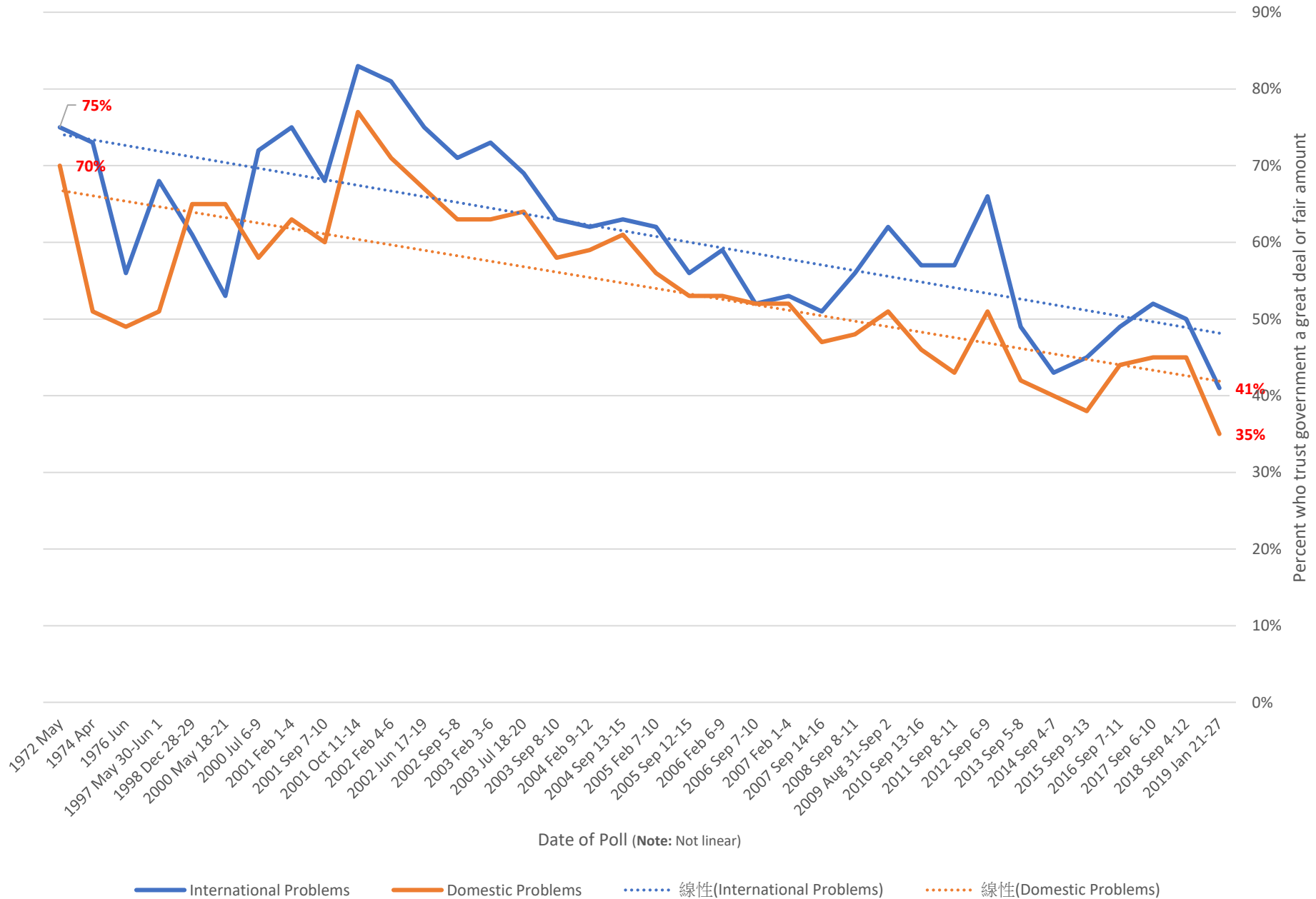
Harvard University

Confidence and Trust in the United States

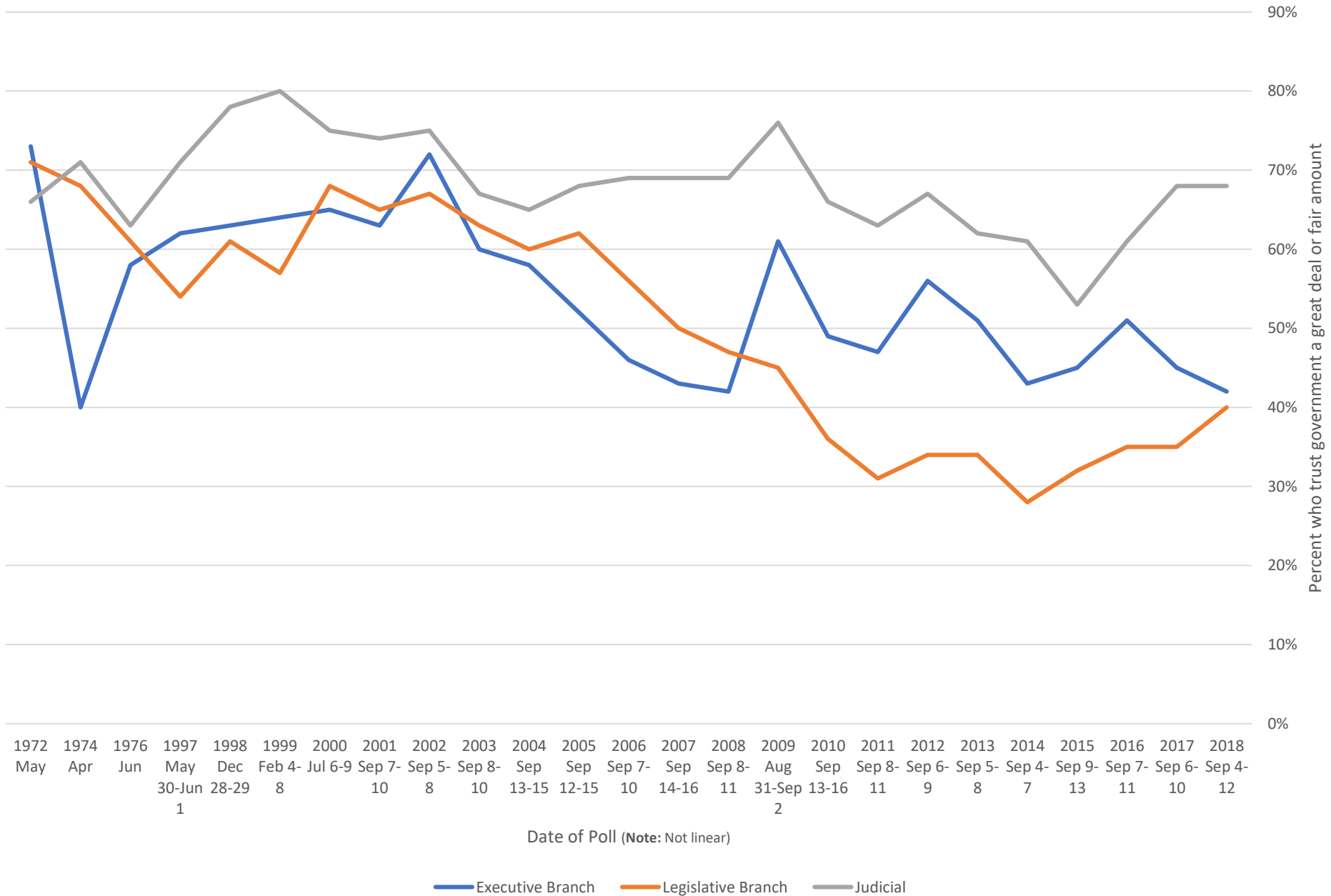
United States: Decline in Trust in Government
[National Election Studies; Gallup; CBS; ABC; Pew]



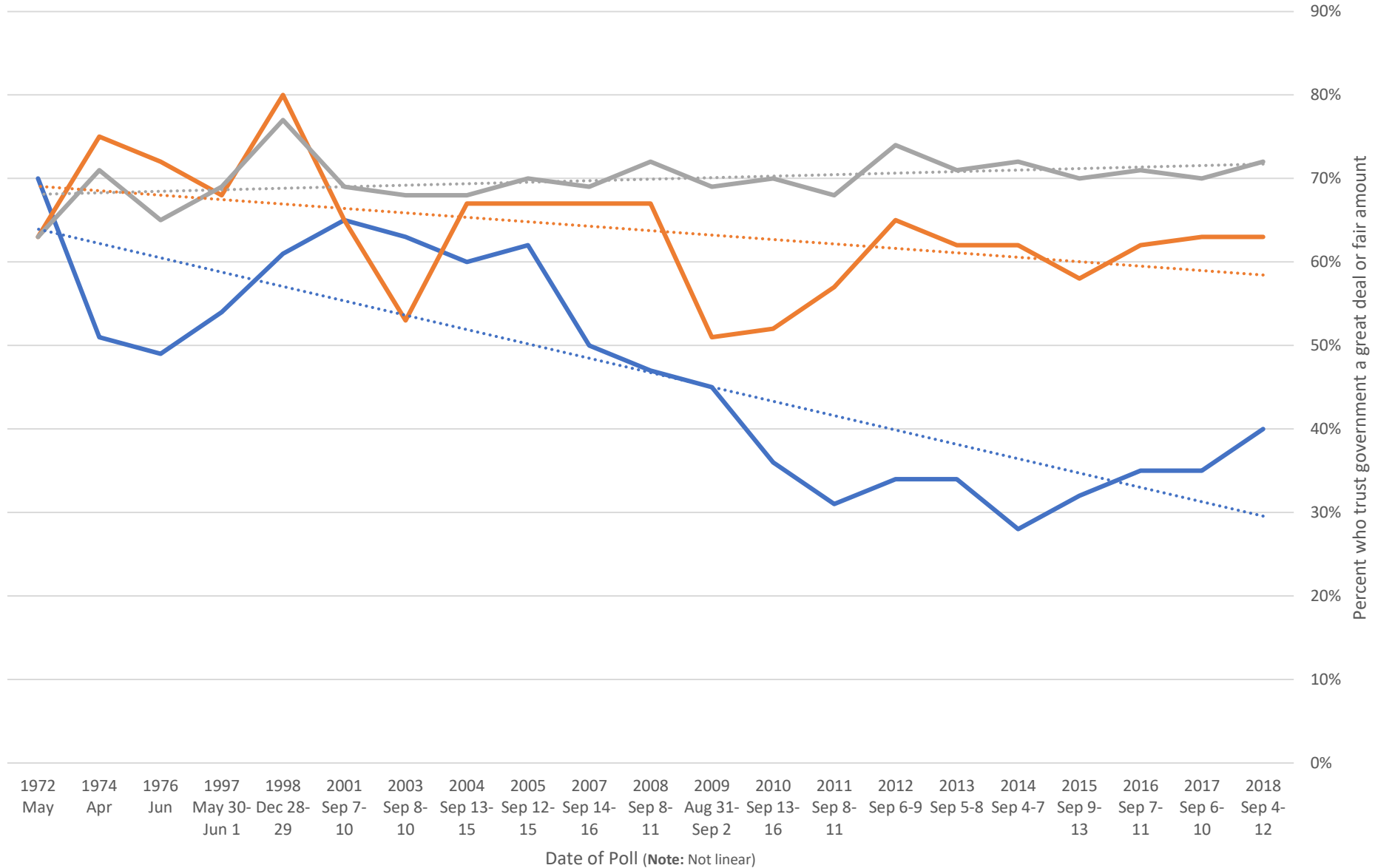
Confidence in National Government for International and Domestic Affairs [Gallup Poll]



United States: Trust in Different Braches of Government [Gallup Poll]

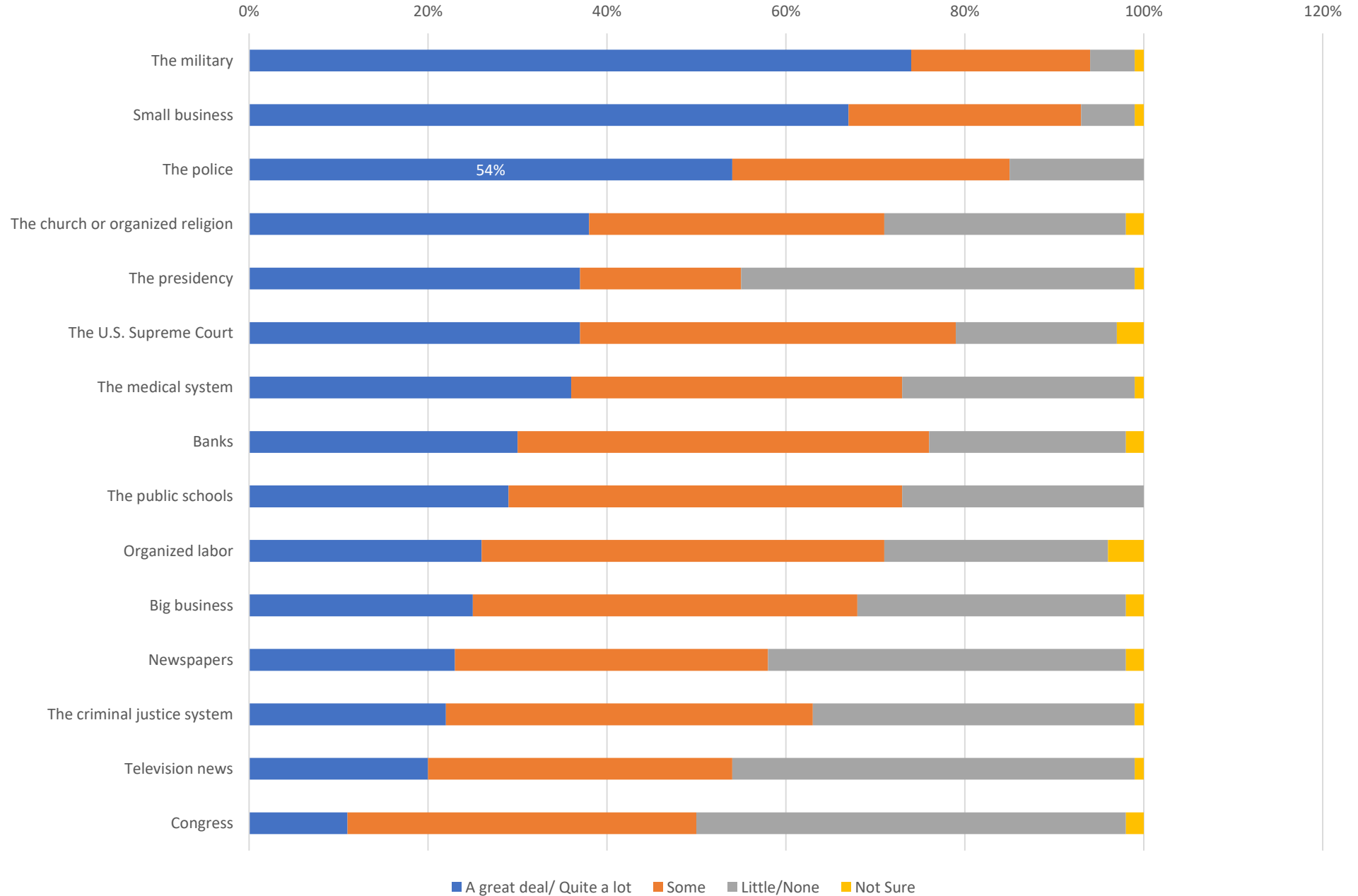


Trust More Stable In Local and Regional Level [Gallup Poll]

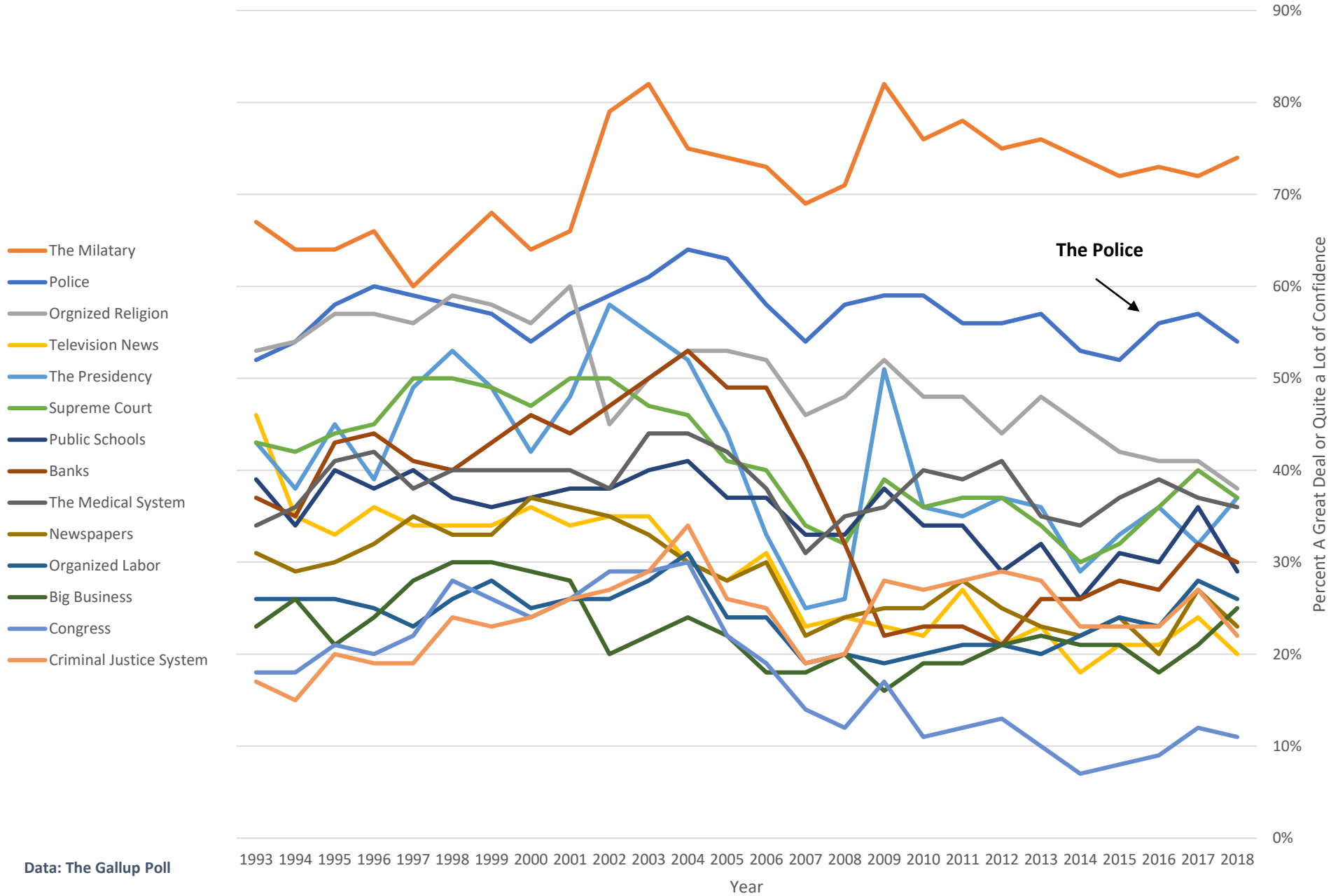


— National Government (Domestic Issues)
 — State (Regional) Government
 — Local Government
⋯ 线性(National Government (Domestic Issues))
 ⋯ 线性(State (Regional) Government)
 ⋯ 线性(Local Government)

Confidence in Different Institutions [Gallup Poll 2018]



Changes in Institutional Trust 1993 - 2019



Data: The Gallup Poll

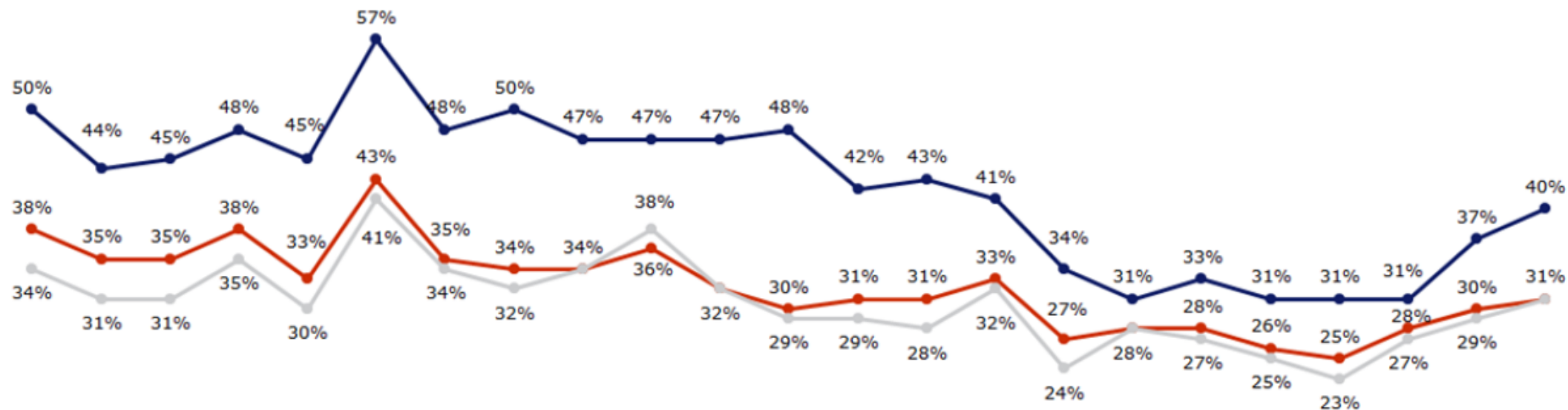
Confidence and Trust in the United States

- Trust in NATIONAL government has declined sharply over last 60 years
- Trust in LOCAL government is higher and more stable
- Trust in police remains high compared to other institutions

Confidence and Trust in Europe

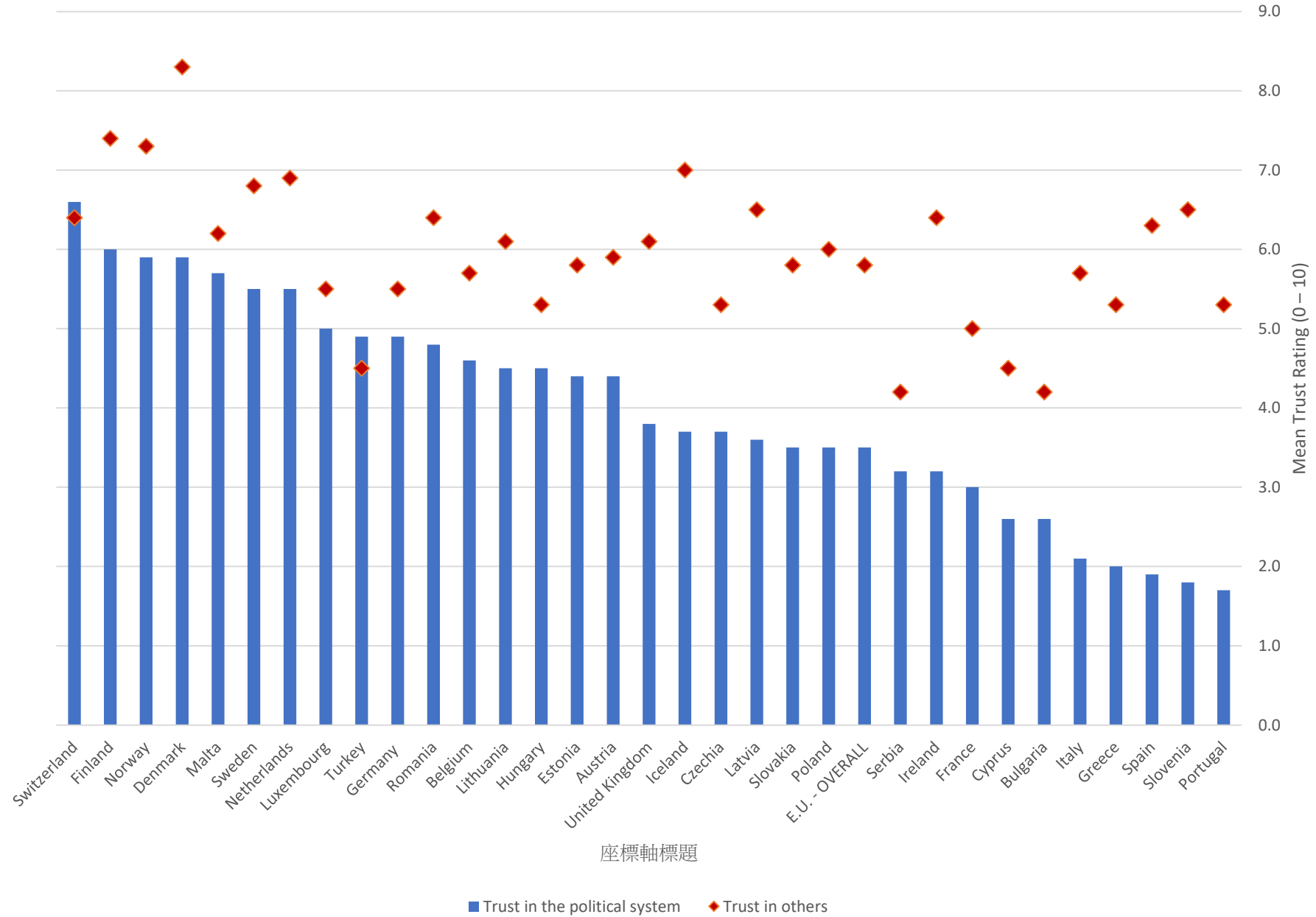
QA8a. (...) For each of the following institutions, please tell me if you tend to trust it or tend not to trust it.
Tend to trust - % EU

—●— The European Union —●— The (NATIONALITY) Parliament —●— The (NATIONALITY) Government

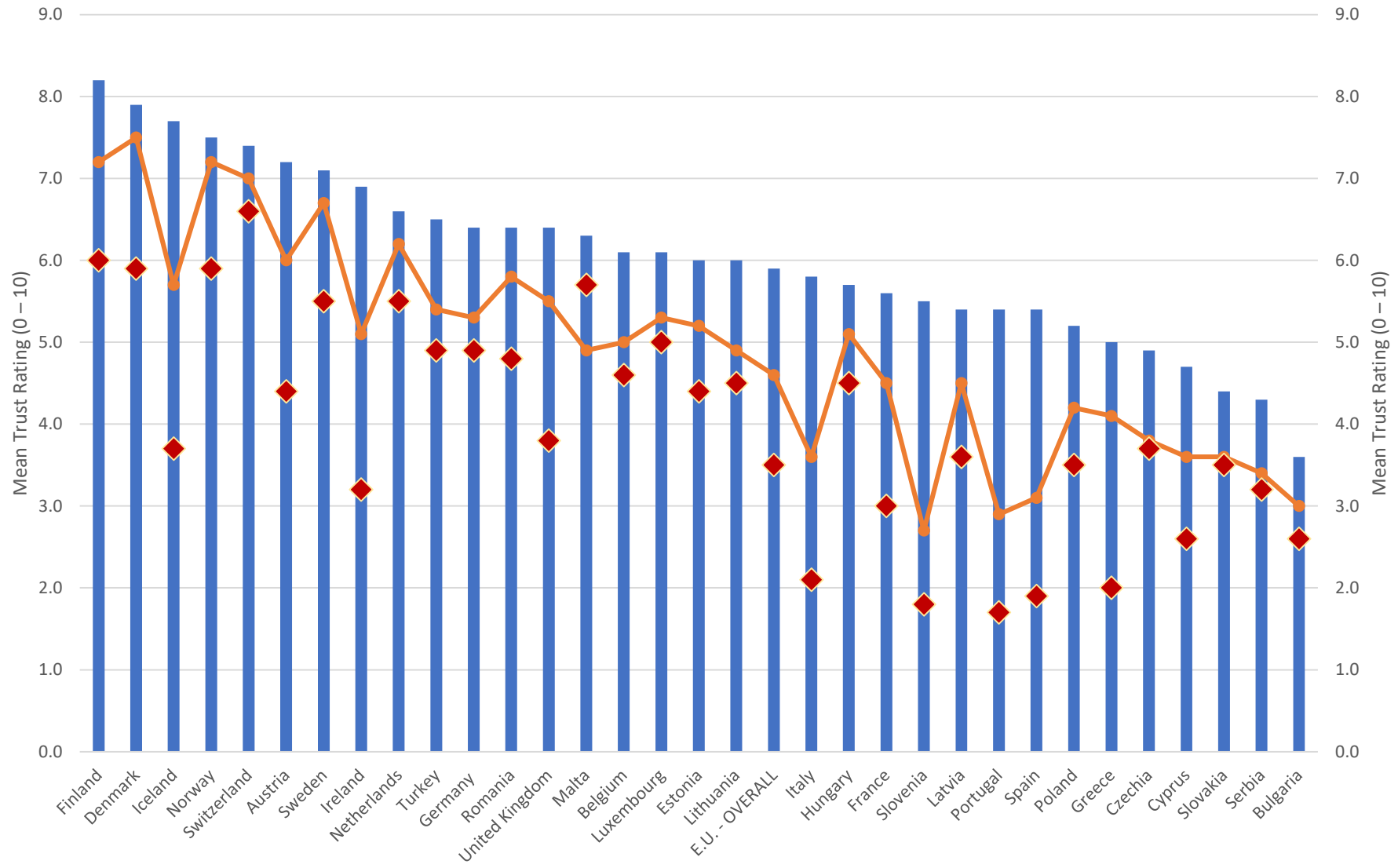


Aut.2004	Sp.2005	Aut.2005	Sp.2006	Aut.2006	Sp.2007	Aut.2007	Sp.2008	Aut.2008	Jan.-Feb. 2009	Sp.2009	Aut.2009	Sp.2010	Aut.2010	Sp.2011	Aut.2011	Sp.2012	Aut.2012	Sp.2013	Aut.2013	Sp.2014	Aut.2014	Sp.2015
EB 62	EB 63	EB 64	EB 65	EB 66	EB 67	EB 68	EB 69	EB 70	EB 71.1	EB 71	EB 72	EB 73	EB 74	EB 75	EB 76	EB 77	EB 78	EB 79	EB 80	EB 81	EB 82	EB 83

Trust in the Political System and Trust in Others



Europe: Trust in Police, Judicial System, Political System



座標軸標題

Source: Eurostat Data from 2013
Adults 16+

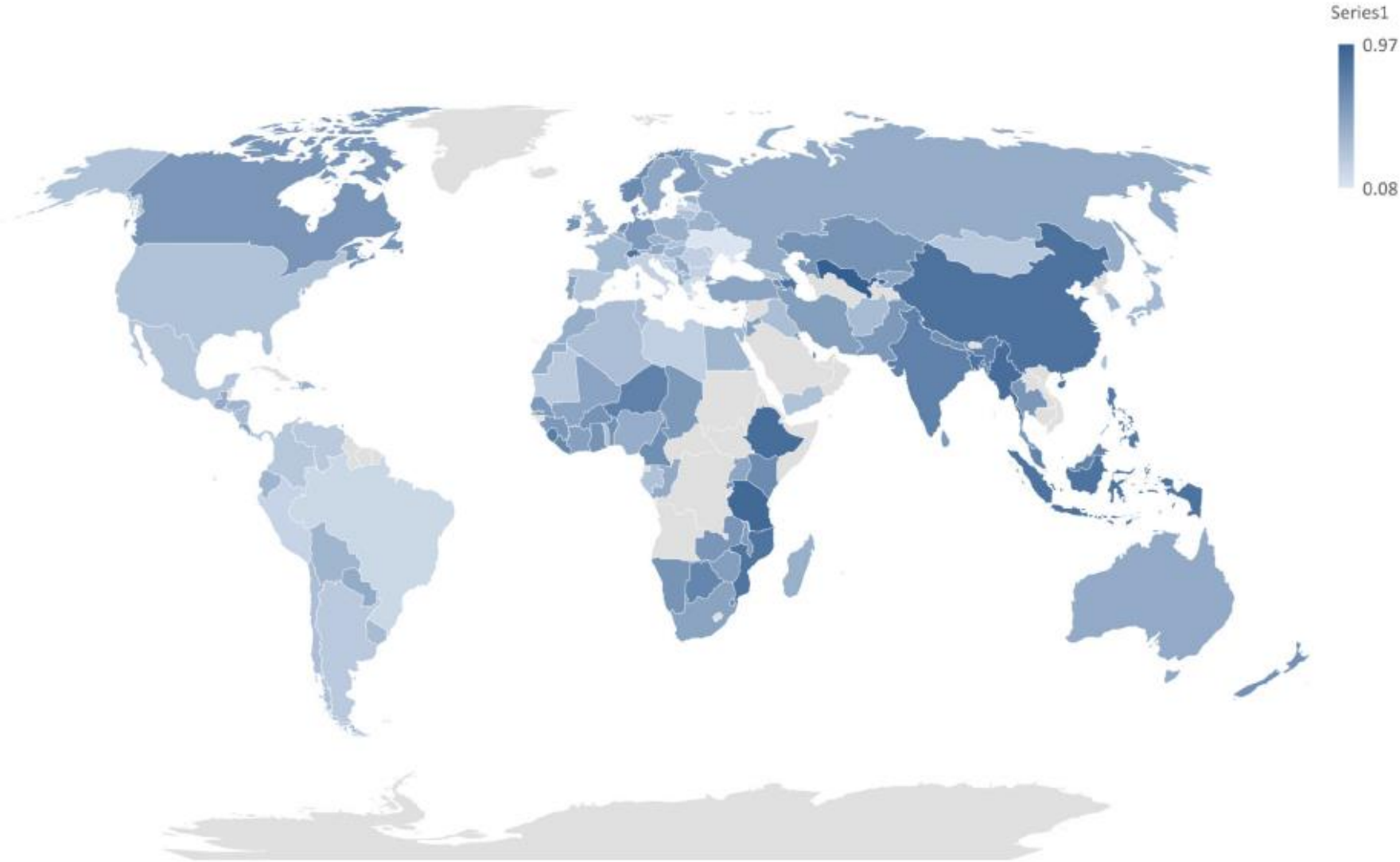
■ Trust in the police
 —●— Trust in Judiciary
 ◆ Trust in Political System

Confidence and Trust in Europe

- Trust more stable in Europe
- Significant variation across individual nations
- Trust in police higher than trust in political system, but with national variation
- Trust in judiciary lower than police but higher than system as a whole
- Weak relationship between trust in police and trust in system

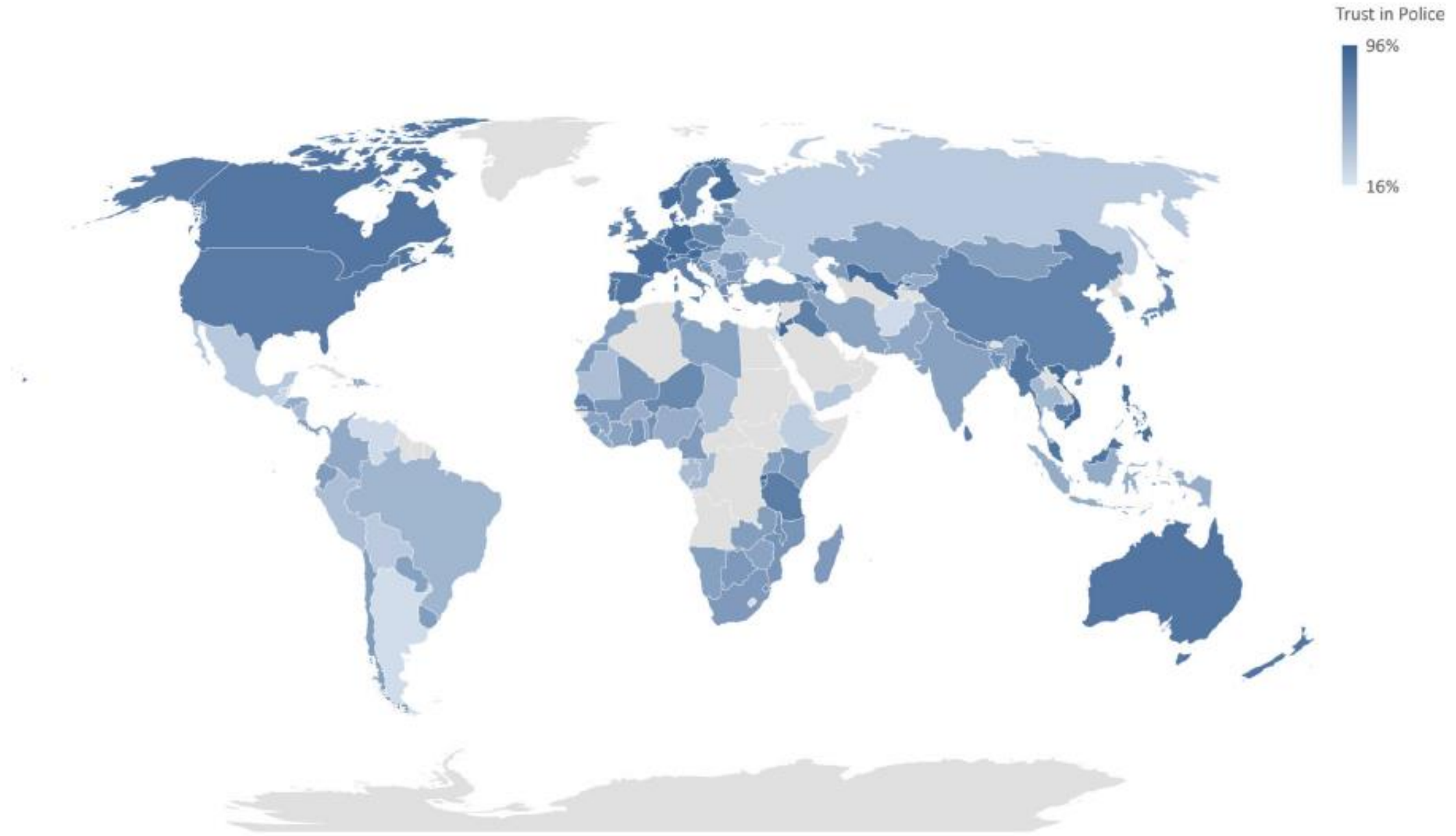
Confidence and Trust Around the Globe

Confidence in National Government
[Gallup World Poll 2018; World Values Survey 2010-14]

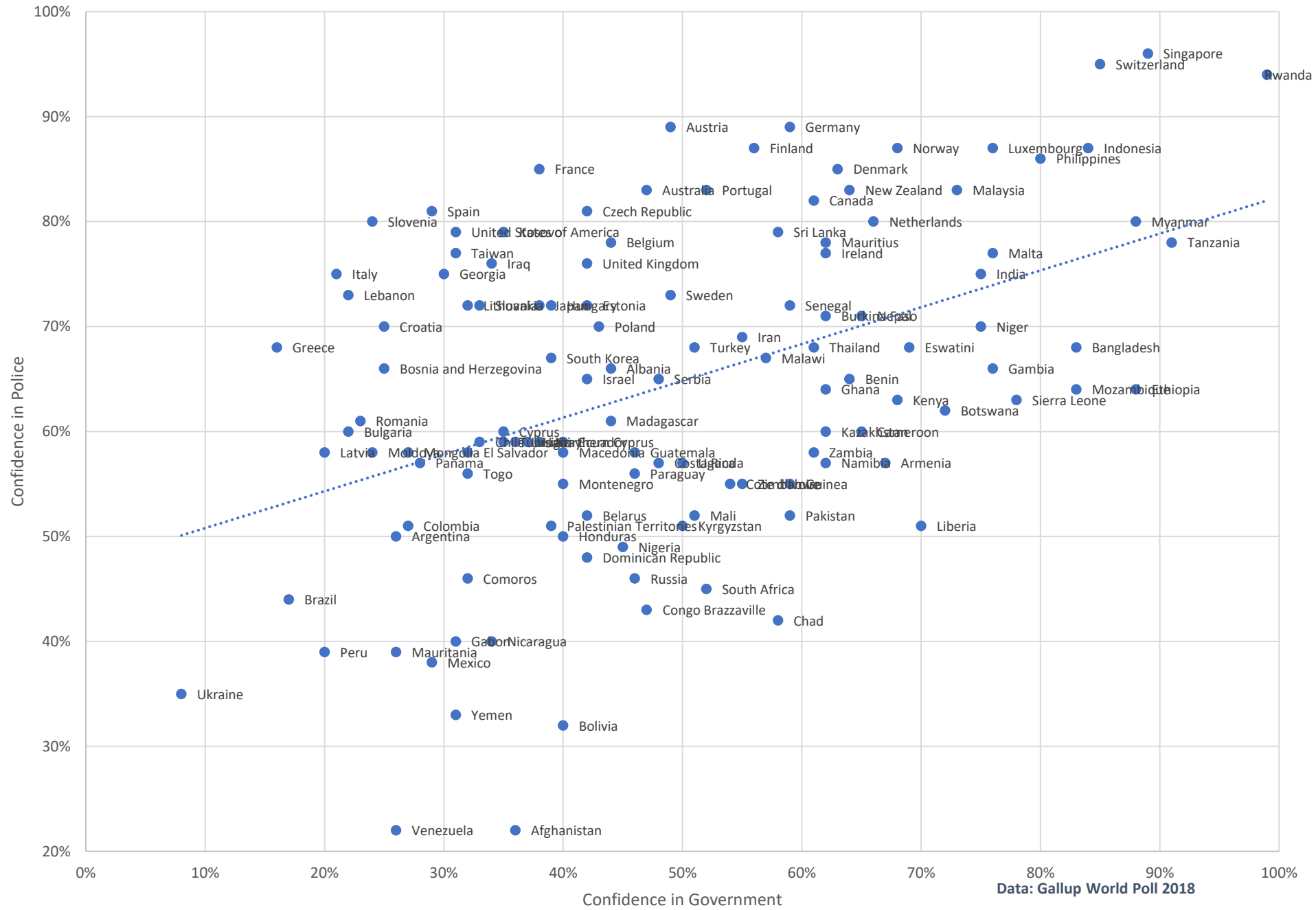


Trust in Police Worldwide

Data: Gallup World Poll 2018; World Values Survey 2010-14]



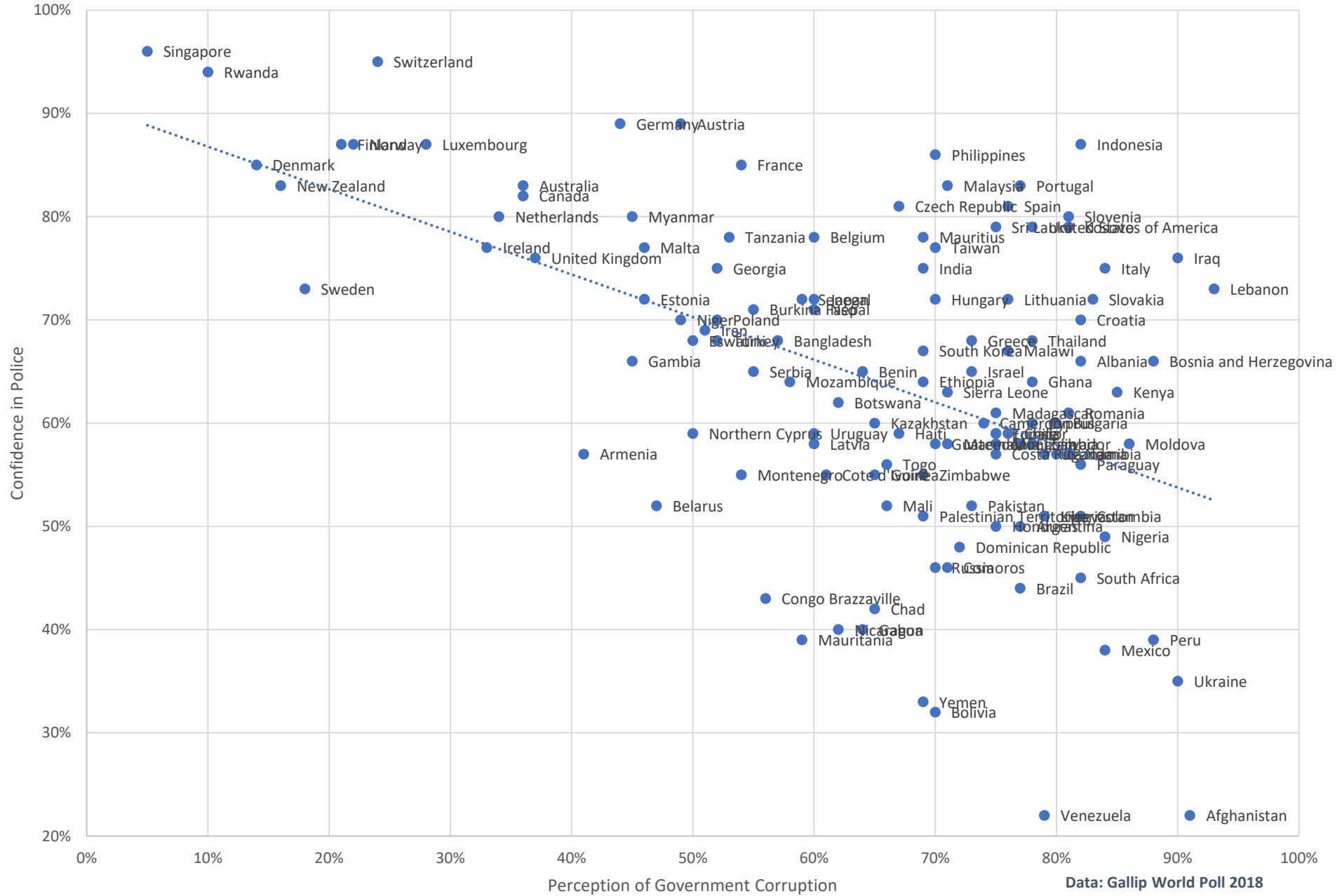
Relationship Between Confidence in Local Police and Confidence in Government



Data: Gallup World Poll 2018

Confidence in Police and Government Corruption

[Gallup World Poll 2018]



Summary

- Global trust in police remains high, relative to other government functions
- Significant national variation in trust
- Data from US suggests that trust is more stable among more local institutions than in nation as a whole

Thank you for your time.....

Chase H. Harrison, Ph.D.

Harvard University

charrison@gov.harvard.edu